



WFD Monitoring in Sweden

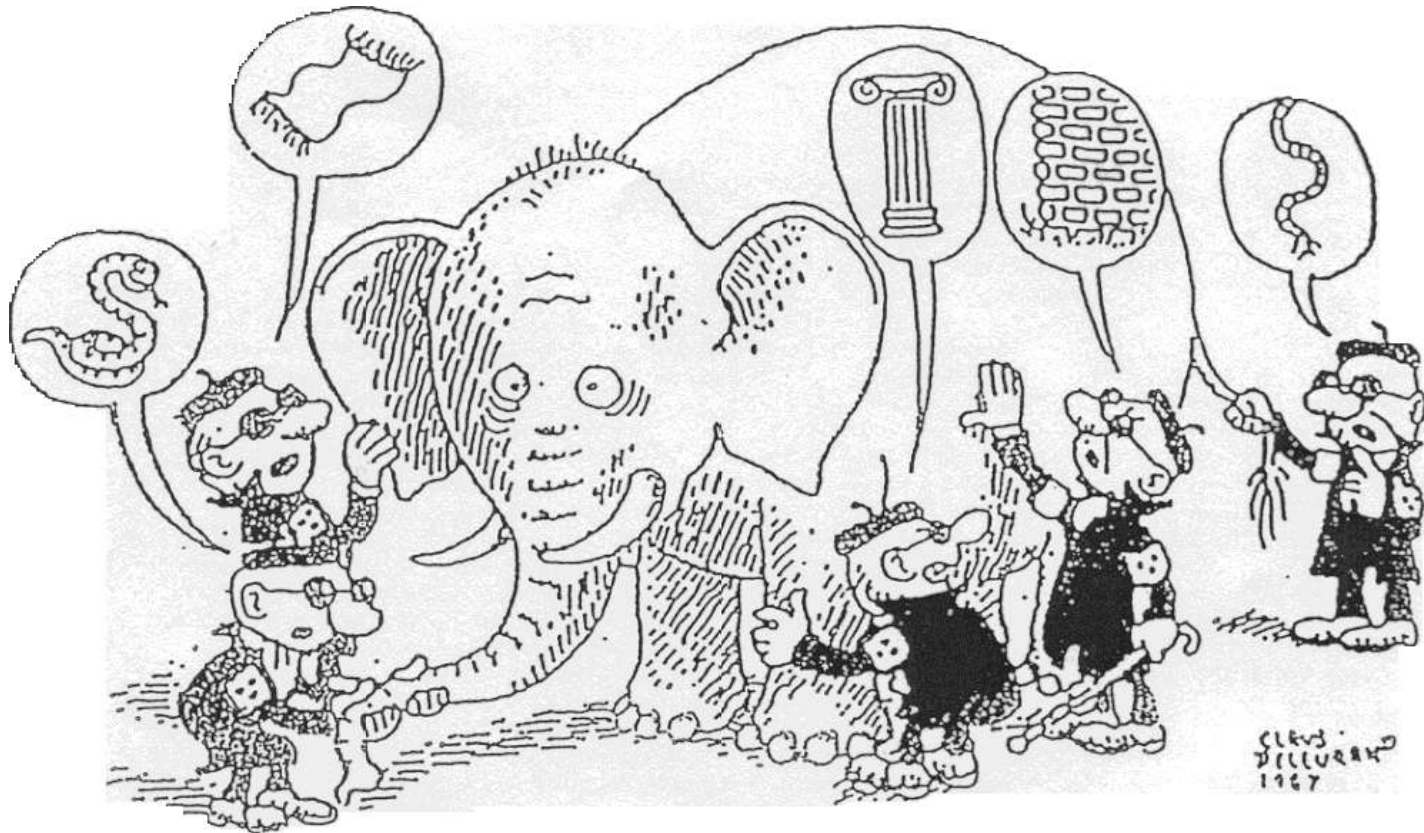
Juha Salonsaari/BS

Competent Authority

The Bothnian Sea River Basin District

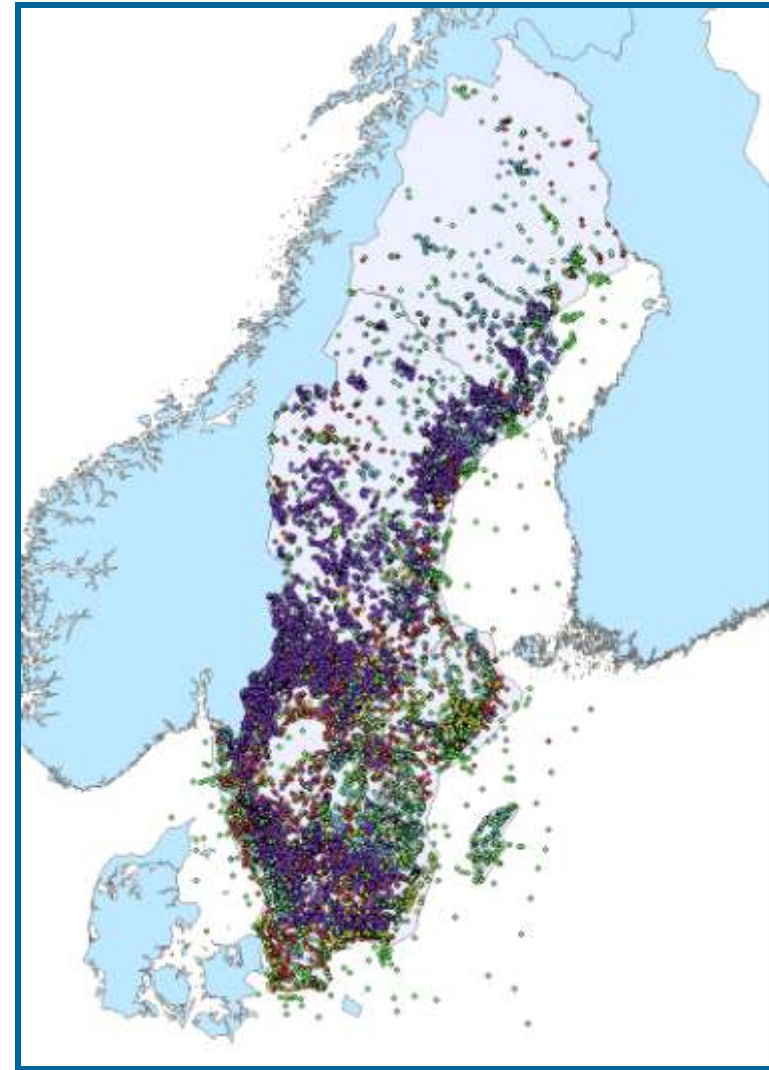


SE: It is not possible to describe the reality without summarizing all the parts...



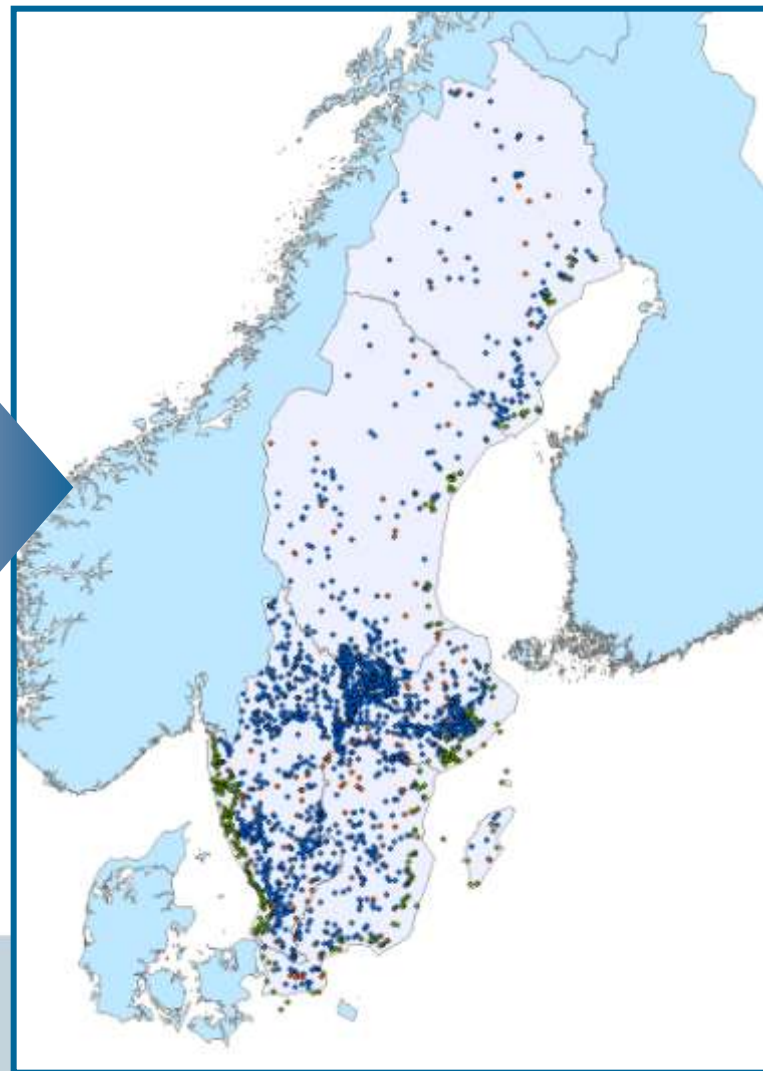
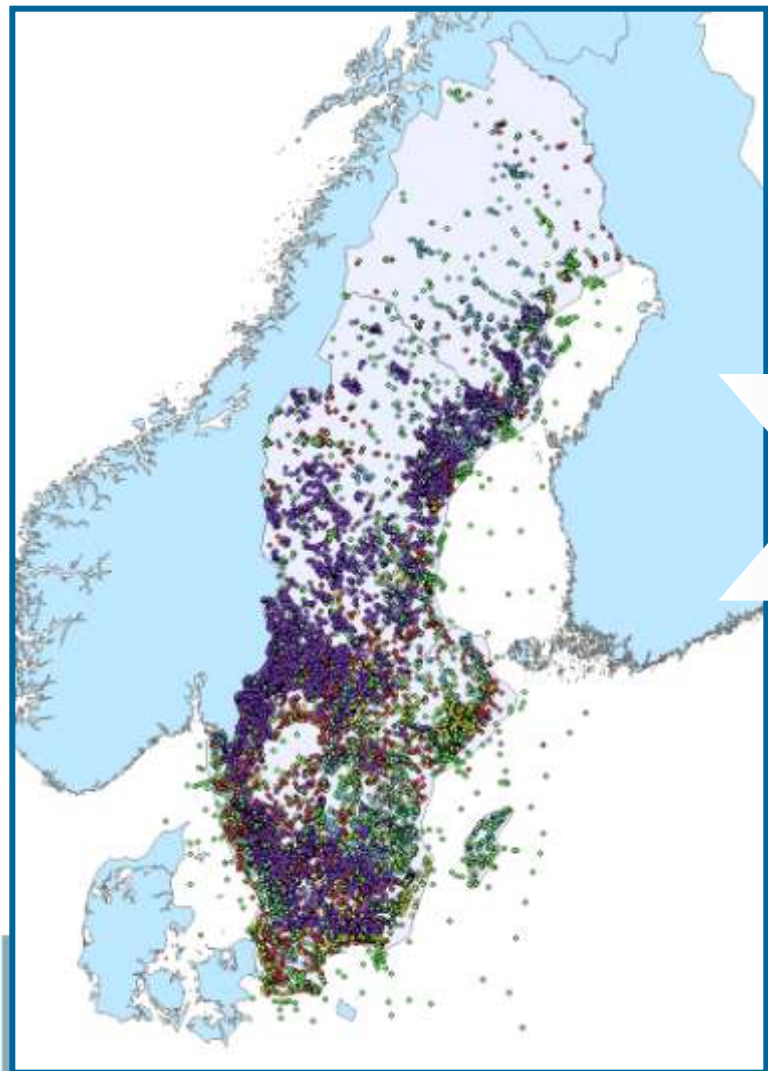
SE: The present situation

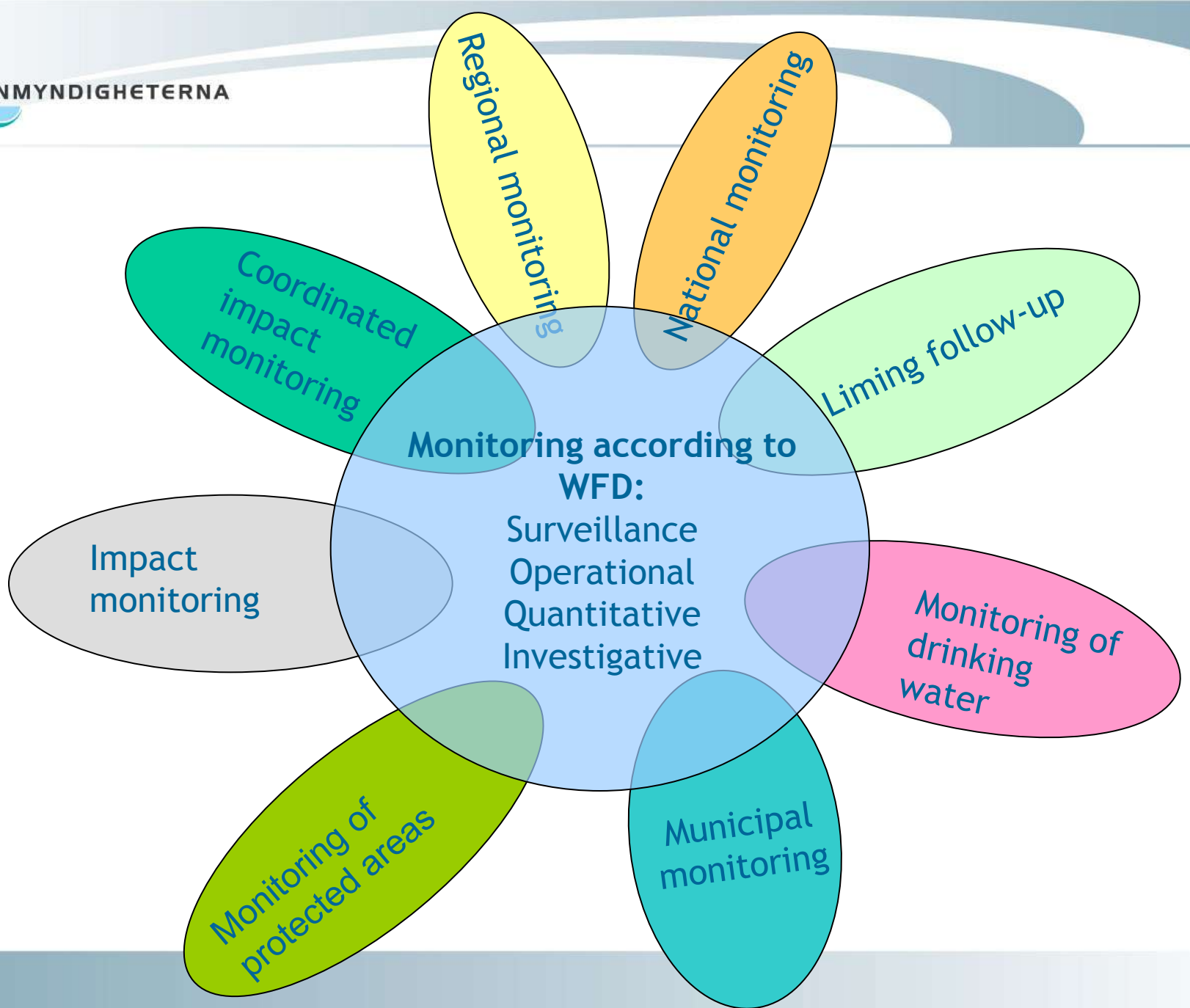
- About 46 595 monitoring stations
- Varying quality !
- Different purposes and organizations
- Various financing
- Very little actual coordination
- Weak control - chaos !



46 595 monitoring stations

Artice 8 - 2769 stations





The making of a new monitoring program

In June 2012 there will be a draft program that can be decided by the SE water delegations.

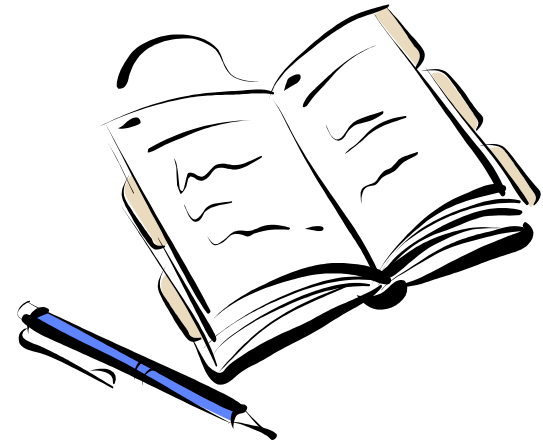
How?

- Use, improve and coordinate ongoing monitoring.
- AND fill in the blanks with models and new stations.



Comprehensive monitoring planning

- 1. Analysis of the needs**
- 2. Description of the present monitoring.**
- 3. Analysis of the gaps**
- 4. Priorities**
- 5. A new program**



Where, how, what and when



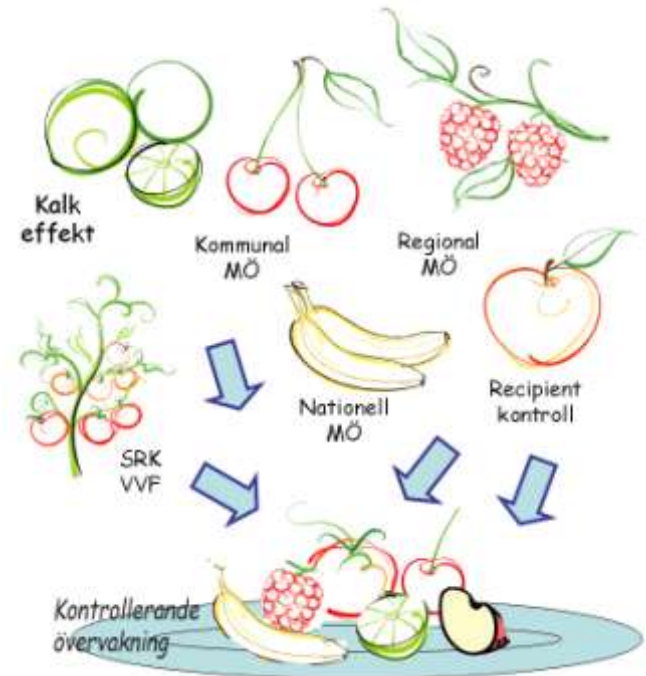
Assess status, risk and the cause of environmental problems

Show the effects of the program of measures



The projects...

- Surveillance
- Operational
- Quantitative
- Investigative
- The process
- Monitoring in VISS
- Legal processes



Problems to be handled...

- No extra money
- No real control over the monitoring
- Practical problems - typology, identification of water bodies etc.



